



Zabrik e.V. / M.A.U. Club
Warnowufer 56
18057 Rostock

Venue specs M.A.U. Club

Contact

Executive Secretary	Hannes Schade	+49 176 70342549	hannes.schade@maclub.de
Booker	Lukas Heine	+49 174 1882191	Lukas.heine@maclub.de
House Technician			technik@maclub.de

Clubsize

capacity: 750+Guestlist
with seating: 200

Stage

permanently installed
outline attached

Loading ways

using 1 stairway: ca. 15m
using the ramp without stairs: ca. 50m

Backstage

2 rooms (each 16m²)
2 bath rooms

Power for nightliner

2x CEE 32A
1x Schuko 16A

Technical specifications

Power Supply

Upstage right:

1x 16A CEE

1x 32A CEE

1x 63A CEE

Sub-distribution:

1x CEE 63A sub-distributor

→ 1x CEE 32A

→ 2x CEE 16A

→ 4x 16A Schuko

PA system

Tops: 4x L'acoustics ARCS II (2 per side)

Outfill: 2x L'acoustics ARCS II (1 per side)

Subs: 4x L'acoustics SB28 (2 per side)

Delay: 2x Kling & Freitag CA 1215-9 (12" and 1,5")

Amps: 4x L'acoustics LA8 with AES/EBU card for tops, subs, Outfill and Delay

Monitoring

Wedges: 7x L'acoustics X12

Subs: 1x L'acoustics SB 15m

Amps: 2x L'acoustics LA 4X

FoH Sound

Analog

Multicore: 3x 30m CAT5e Cable
Connex 40/8 Stagebox with 100m 40/8 Multicore and 5m 32 Ch. Monitorsplit
Zeck 24/8 Stagebox with 30m 24/8 Multicore

Digital

Desk: Yamaha QL 5 incl. RIO 3224-D2, Behringer X 32 incl. 2x Behringer S16 Stagebox,
Apple Airport Express Router when needed

Microphones

1x Shure Beta 91
1x Shure Beta 52
1x AKG D 22
5x Sennheiser e604
4x Shure Beta 58
6x Shure SM 57
7x Shure SM 58
2x Sennheiser e606
2x Sennheiser K6 / ME 64
2x AKG Perception 150
4x Rode NT 5
3x Palmer PAN 04 Stereo DI Box passive
6x Palmer PAN 02 Mono DI Box active

Stands

3x long, straight, round base
1x short, boom, round base
10x short, boom
11x long, boom

Lightsystem

Fronttruss: 7x Par 64 long MFL 500W
4x Fresnel ADJ Encore FR150Z
3x 2Lite active Blinder

Sidetrusses: 2x Par 64 long MFL 500W

Backtruss: 8x Par 64 long VN5P 500W
4x Showtec Infinity IS-200
6x Clay Paky Mini-B
6x Cameo Zenit 200 LED Zoom Par
12x Generic LED IRGBWS (Backdrop)
2x 2Lite passive Blinder

Floor: 6x Par 64 short VN5P 500W
6x Par 64 short MFL 500W

Dancefloor: 8x Eurolite TMH-12
14x Generic LED IRGBWS

Dimmers: 1x Datapack 12x10A
1x Botex DMD 12 JR 12x10A

Fog: 1x Hazebase BaseClassic

Haze: 1x Smokefactory Tourhazer II
Strobes: 2x Varytec Strobe Xenon 3000 DMX
LED Floor: 6x Futurelight Pro Slim PAR-12 MK2 HCL

FoH Light

Desks: GrandMA 2 Light
MA Lightcommander 24/6

DMX: GrandMA 3 4k 8-Port Node
3 Lines XLR 5 Pin from FoH to stage
1x CAT5e from FoH to stage

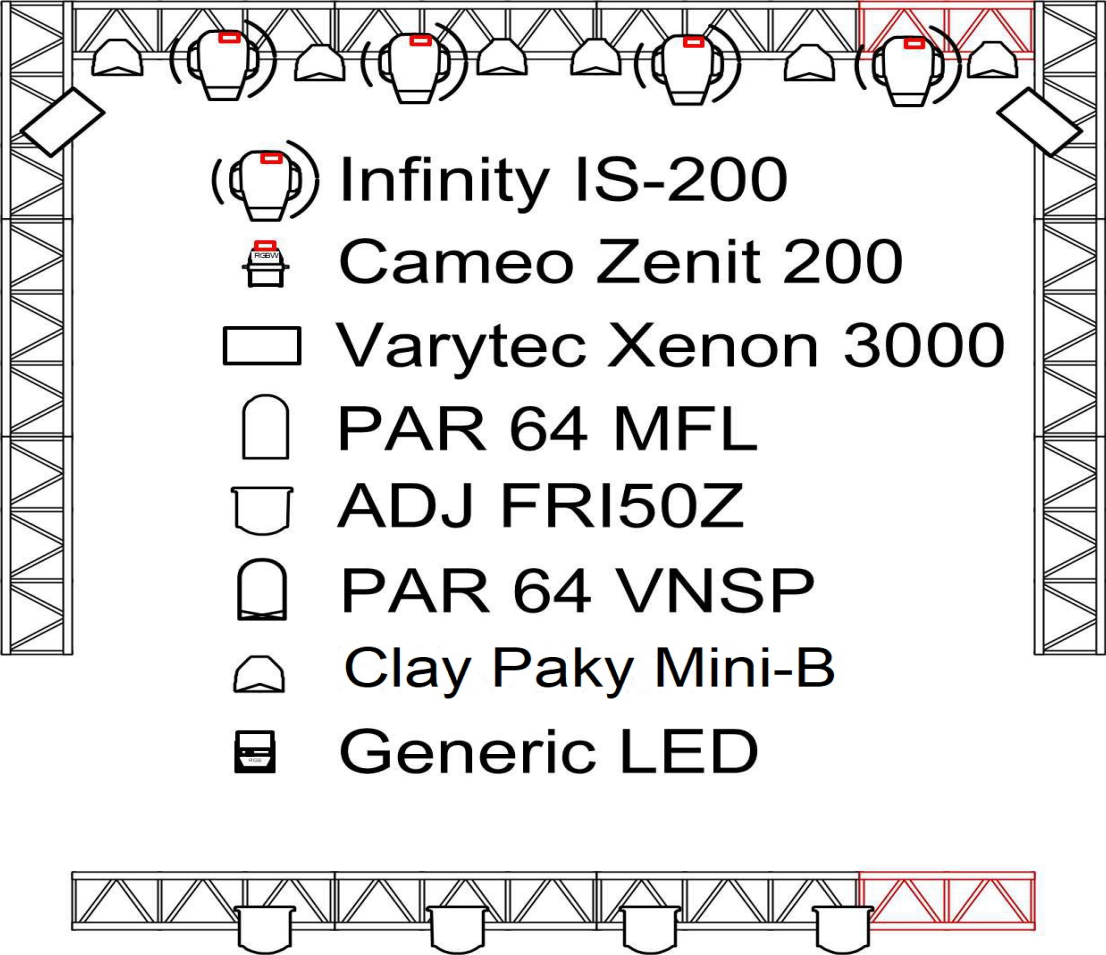
Video

Screen: Frontprojection image size 427x240cm

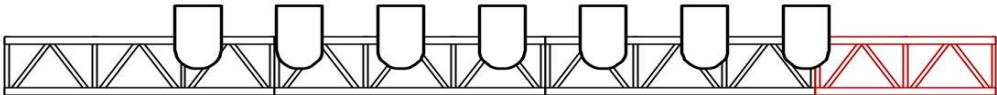
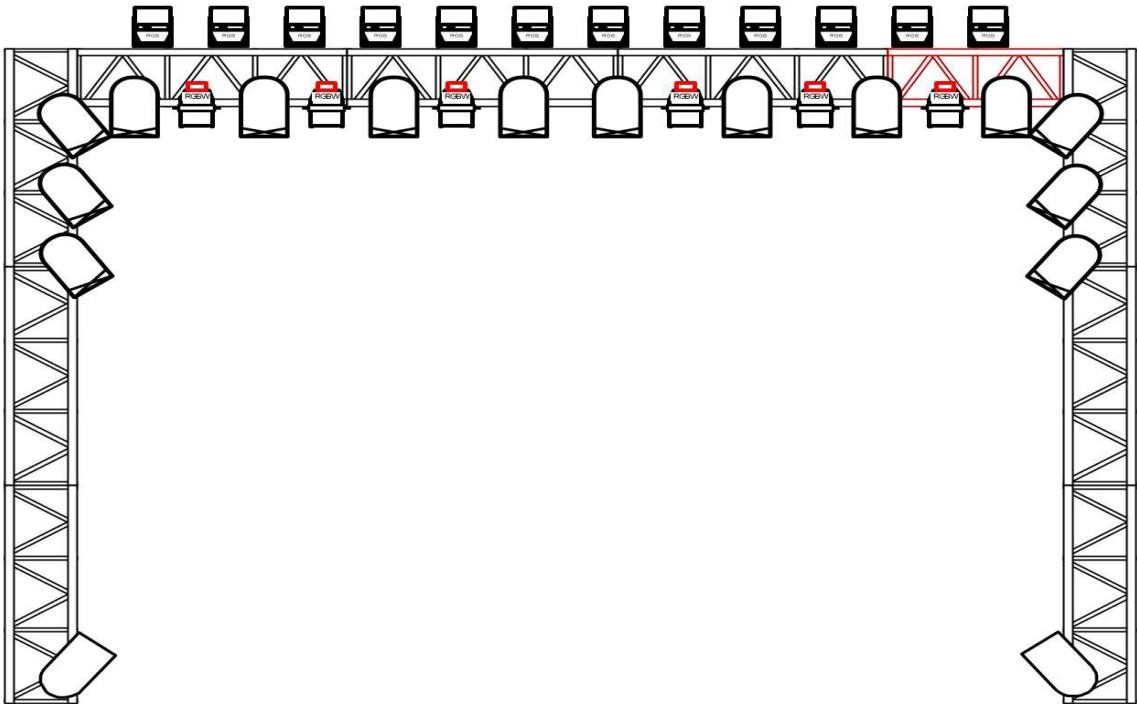
Beamer: Panasonic PT-VMZ60 WUXGA
<https://business.panasonic.de/visuelle-systeme/pt-vmz60>

Light Plot

lower flange



upper flange

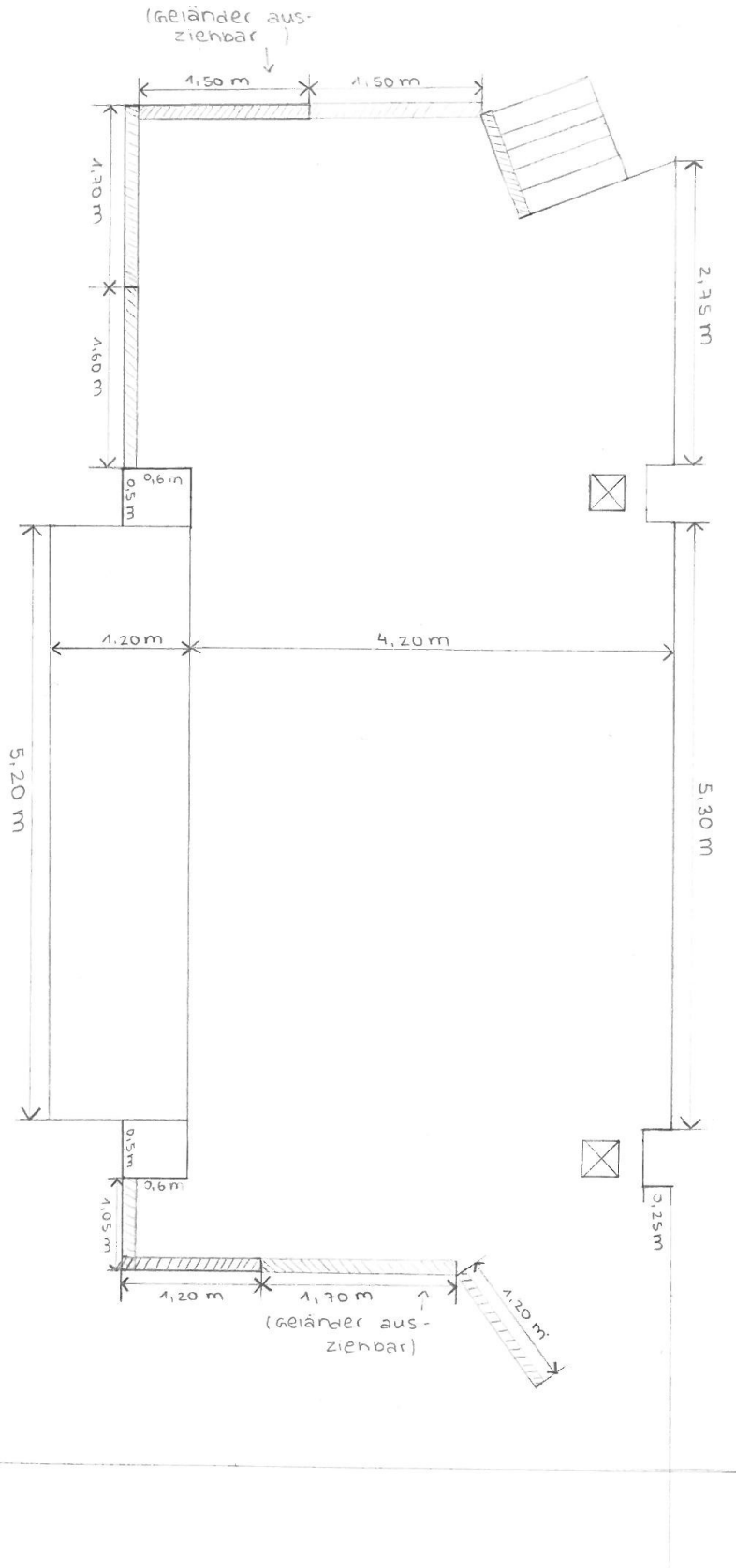


Stage

clear height/Lichte Höhe: 9,5 feet/2,9m



clear height/Lichte Höhe: 9,5 feet/2,9m



Venuue Specs (Bühne)

Maßstab 1 : 200